

2012 SUMMER

**INVESTIGATION
FUNDAMENTALS**

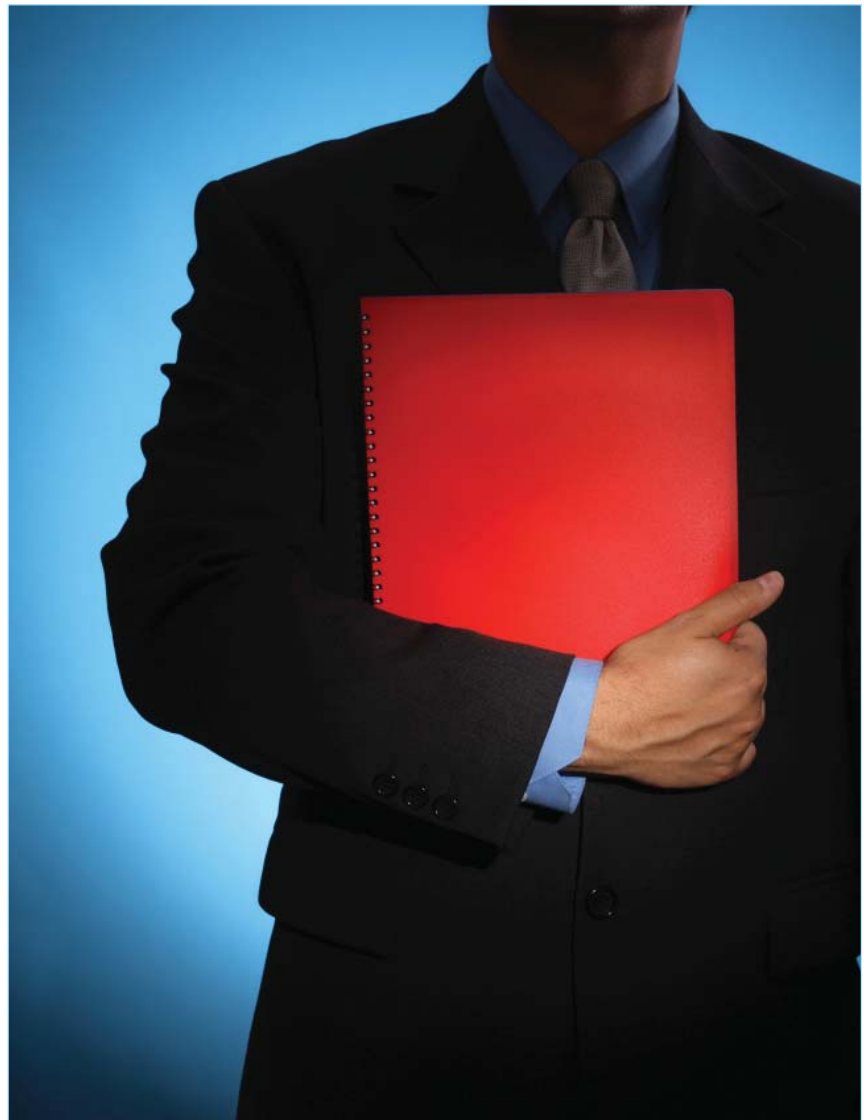
*Expert Report Writing:
Best Practices for Producing
Quality Reports.*

New National Officers!

2012 Training Schedule

Annual Meeting Recap

Certification News



THE NATIONAL FIRE INVESTIGATOR

NATIONAL ASSOCIATION OF FIRE INVESTIGATORS





National Association of Fire Investigators

857 Tallevast Rd.
Sarasota, FL 34243

Tollfree US & Canada
1-877-506-6234

Elsewhere
941-359-2800

Fax
941-351-5849

www.nafi.org

Cover Photo Credits

©iStockphoto.com/marsbar
Marcela Barsse
©iStockphoto.com/blueberries
Bart Sadowski

NAFI President's Message from John Kennedy

August 9, 2012

Friends and Colleagues:

After so many years of serving as the president of NAFI, I recently asked the Board of Governors to consent to my retirement. I cannot tell you what a pleasure it has been to watch our association grow and prosper since its founding in 1961. The explosive (pun intended) growth of the scientific knowledge base and professionalism of our industry has been a marvel. It has only been matched by NAFI's participation and leadership in that growth.

It is with extreme pleasure and pride that I pass along the presidency of the National Association of Fire Investigators to Professor Ronald L. Hopkins. I can think of no one who will better serve you in the office of NAFI President. No one has better earned the respect and admiration of the professional fire investigation community than Ron.

It is with the greatest of confidence that I pass along the reigns of leadership to this man who has proven his dedication, foresight, and teaching skills to generations of fire professionals.

Ladies and gentlemen, NAFI is in excellent hands.

*John Kennedy, CFEI
NAFI Founder*

NAFI ELECTS RONALD HOPKINS AS ITS NEW PRESIDENT

Sarasota Florida, August 8, 2012

At NAFI's General Annual membership meetings the week of August 6, Ronald L. Hopkins, CFEI, CFII, CVFI, CFPS was elected as the association's new president. Internationally known and respected educator, firefighter, fire investigator, and active NAFI member, Ron was an obvious choice to take up the position from retiring President John Kennedy.



He currently serves as the NFPA Fire Service Section Representative Principal Member on the NFPA Technical Committee on Fire Investigations (921); chairman of the NFPA's Technical Committee on Professional Qualifications for Fire Service Instructor (1041); and two term past chair and current member of the Executive Board of the NFPA Fire Science Educators and Technology Section;

During his previous decades of service to NAFI, Ron has and continues to serve as a Director of the various worldwide NAFI and NAFI/NFPA Fire, Arson, and Explosion Investigation Training programs, and as Chairman of the International Certification Board. He has twice been named as the NAFI Man of the Year, and is the recipient of NAFI's Lifetime Service Award.

After a thirty year career Ronald L. Hopkins retired from Eastern Kentucky University July 1, 2007 as an Associate Professor and Associate Graduate Faculty in the Fire and Safety Engineering Technology Program, originally joining the faculty August, 1976. Ron currently continues to consult with the ECU OSHA Ed Center where he serves as the course chair for the Construction Industry Courses,

He currently holds a number of national and international professional certifications including: Certified Fire Protection Specialist, Certified Fire and Explosion Investigator, Certified Fire Investigation Instructor, Certified Vehicle Fire Investigator, Certified Fire Instructor I and II (meeting NFPA-1041 Requirements) as well as Certified Fire Firefighter (Career and Volunteer, Kentucky), Certified Fire Service Instructor (Kentucky) and Law Enforcement Instructor (Kentucky).



Confined Space Program, Disaster Site Worker Program, and Hazardous Materials Course as well as the developer and instructor for the General Industry and Construction Industry Train-the-Trainer Outreach courses.

He also runs his own private fire and explosion investigation and consulting firm, Trace Inc. located in Richmond, Kentucky.

NAFI ELECTS NEW BOARD OF DIRECTORS

On August 8, 2012, the nominating committee met and the Board of Governors elected a new slate of National Officers and a new board of directors. Your new NAFI leadership team is as follows...

NATIONAL OFFICERS

President: Ronald L. Hopkins, CFEI, CFII, CVFI
 Vice President: Michael G. Beasley, CFEI, CFII, CVFI
 Treasurer: Richard J. Meier, CFEI, CFII, CVFI
 Secretary: Nicholas J. Smith, CFEI, CFII, CVFI
 Legal Counsel: Brain P. Henry, CFEI
 Chairman of the Board: Patrick M. Kennedy, CFEI, CFII, CVFI
 Vice Chair: Kathryn C. Smith, CFEI, CFII, CVFI
 Exec. Director Membership Services: Heather M. Kennedy
 Exec. Director Strategic Planning: Christine Meier

BOARD OF DIRECTORS

Joseph M. Bloom, CFEI
 Ronald P. Chauffe, Jr., CFEI
 Daniel L. Churchward, CFEI
 Cam J. Cope, CFEI, CFII, CVFI
 Ryan M. Cox, CFEI, CFII, CVFI
 Richard L. P. Custer, CFEI, CFII
 Walter P. Godfrey, Jr., CFEI
 Gregory E. Gorbett, CFEI, CFII, CVFI
 Michael C. Hopkins, CFEI, CFII, CVFI
 William D. Hicks, Jr., CFEI, CFII, CVFI

Bernard T. Kromenacker, CFEI, CFII, CVFI
 Dennis J. Krouse, CFEI, CFII
 Dennis J. Merkley, CFEI, CFII, CVFI
 Fred Paul, III, P. E., CFEI, CFII
 Angelo L. Pisani, CFEI
 Steve R. Riggs, CFEI, CFII, CVFI
 Kenneth J. Schaub, CFEI
 James H. Shanley, Jr. P.E., CFEI, CFII
 Dennis W. Smith, CFEI, CFII
 Andrew T. Tinsley, CFEI
 C. Randy Watson, CFEI, CFII, CVFI

NAFI INTRODUCES NEW CERTIFICATE FORMAT

We have redesigned the NAFI Membership, Certification and Re-certification certificates to better accommodate our new membership database and to give NAFI documents a more uniform look

Starting July, 2012 the certificates for membership renewal, new certifications, and recerts will have a new look. Membership certificates have a blue border, CFEI, CFII & CVFI certificates have a gold border, and the Recertification certificates have a green border.

The membership cards and on-line “proof of membership in good standing” have not changed.

When in doubt, you may check a member’s credentials by looking them up in the membership directory or by calling the NAFI Membership Services Office at 1-877-506-NAFI.

A BIG “당신을 만나서 기뻐” (PLEASED TO MEET YOU!)

NAFI would like to thank three continuing supporters of NAFI: Korea’s National Emergency Management Agency (50 applicants), Fire Insurers Laboratories of Korea (36 applicants) and Samsung Electronics (18 applicants). Just this month classes were held and the CFEI exam given to 104 individuals at 3 separate locations in Korea. The Samsung group’s examination was for 18 including individuals flown in from 11 countries. NAFI welcomes you.

NEW DIGITAL EDITION OF THE NATIONAL FIRE INVESTIGATOR

New postal regulations have made delivery of The National Fire Investigator to our foreign members difficult, slow and expensive. The Board has made the decision to issue the newsletter electronically to members outside of the US and Canada. They’ll get it faster, next day rather than 2-4 weeks for a paper copy. Starting with this edition, all members will get the digital edition first, then US and Canadian members will receive the Print Edition in the mail. As always, PDF version are available in the Members’s section of NAFI.org.

...continued on Page 17



Membership Certificate



CFEI, CFII, CVFI Certificate



Recertification Certificate

EXPERT REPORT WRITING: BEST PRACTICES FOR PRODUCING QUALITY REPORTS

David J. Icove, PhD, PE, CFEI

The University of Tennessee, Knoxville, Tennessee, USA

Brian P. Henry, JD, CFEI

Smith, Rolfes & Skavdahl Co., LPA, Sarasota, Florida, USA

ABSTRACT

Fire investigations, in order to be successfully litigated, must be carefully documented in accordance with present day uniform guidelines and professional standards. This paper provides a successful and time-tested report format that covers these key components for litigators with sufficient background to present cases through their investigation, deposition, mediation, and trial phases. Included in this presentation are helpful report checklists along with cross references to essential sections of *NFPA 921*, *NFPA 1033*, and applicable *ASTM* standards.

INTRODUCTION

In today's world, the fire investigator's expert report may be the single most important piece of documentary evidence in a case. Expert reports must be carefully documented in accordance with uniform guidelines and professional standards. With that in mind, comprehensive reports also make it more difficult to challenge expert testimony.

Five frequently asked questions by fire investigators include: (1) Why do we write Expert Reports? (2) What are the applicable guides, protocols, and standards? (3) How do I apply and document the "Scientific Method" in Expert Reports? (4) What is the proper format of the Expert Report? (5) What are the requirements of the Federal Rules of Civil Procedure? and (6) How can I defend my Expert Report during testimony? This paper provides a set of "best practices" that attempt to answer both these and similar questions.

WHY WRITE EXPERT REPORTS?

For fire investigators, there are numerous common reports that are prepared. These reports start from the fire incident run report, preliminary and final reports of investigations, laboratory reports, and even affidavits. The crucial test for

an expert fire investigation report is that it contains sufficient information that would allow an independent peer reviewer to arrive at a similar, if not the same conclusion.¹

Numerous reasons and requirements exist to justify the writing of expert reports. For example, in federal courts, expert reports are usually required to comply with the Federal Rule of Civil Procedure (FRCP) known as Rule 26(a)(2)(B). Other uses of expert reports include assistance in settlement negotiations, motions in affidavit format, and to support testimony in arbitration hearings. Reports may take the form of affidavits in both civil and criminal litigation.

WHAT ARE THE APPLICABLE GUIDELINES AND STANDARDS?

The Rule 26(a)(2)(B) report identifies what is requested by the witness, lists reviewed documents, states the methodology and activities undertaken, itemizes opinions and their bases, and provides background on the expert's qualifications. Requirements for these reports also mirror those identified in the National Fire Protection Association's *Standard for Professional Qualifications for Fire Investigator*, 2009 Edition which states that an investigator should:

4.7.1* Prepare a written report, given investigative findings, documentation, and a specific audience, so that the report accurately reflects the investigative findings, is concise, expresses the investigator’s opinion, contains facts and data that the investigator relies on in rendering an opinion, contains the reasoning of the investigator by which each opinion was reached, and meets the needs or requirements of the intended audience(s).²

Other guidelines and standards that apply to expert reports include the NFPA Fire Protection Handbook, 2008 Edition; the SFPE Fire Protection Handbook, 4th Edition; *NFPA 921, Guide for Fire and Explosion Investigations*, 2008 Edition; Society of Fire Protection Engineers “Design Guides”, American Society for Testing and Materials (ASTM); and the U.S. Department of Justice Guidelines and Protocols.

The ASTM standards form a hierarchy, as shown in Figure 1, that address both the physical and informational aspects of a fire investigation, particularly when civil or criminal litigation is anticipated. The overall capstone standard is ASTM E 1188 – *Standard Practice for Collection and Preservation of Information and Physical Items by a Technical Investigator*.

ASTM E 860, the *Standard Practice for Examining and Preparing Items That Are Or May Become Involved In Criminal or Civil Litigation*, cites ASTM E 1459, the *Standard Guide for Physical Evidence Labeling and Related Documentation*, ASTM E 1492 – *Receiving, Documenting, Storing, and Retrieving Evidence in a Forensic Laboratory*, and NFPA 921 – *Guide for Fire and Explosion Investigations*. Likewise, ASTM E 1020 – the *Standard Practice for Reporting Incidents* cites ASTM E 620 – *Reporting Opinions of Scientific or Technical Experts* and ASTM E 678 – *Standard Practice for Evaluation of Technical Data*.

KEY AREAS ADDRESSED IN WRITTEN REPORTS

Those who prepare expert fire investigation reports must consider the style, whether peer review is needed, formatting, and signature requirements. The fire investigation report should read like a scientific report which contains findings, witness observations, diagrams/photographic documentation, conclusions, recommendations, and references.

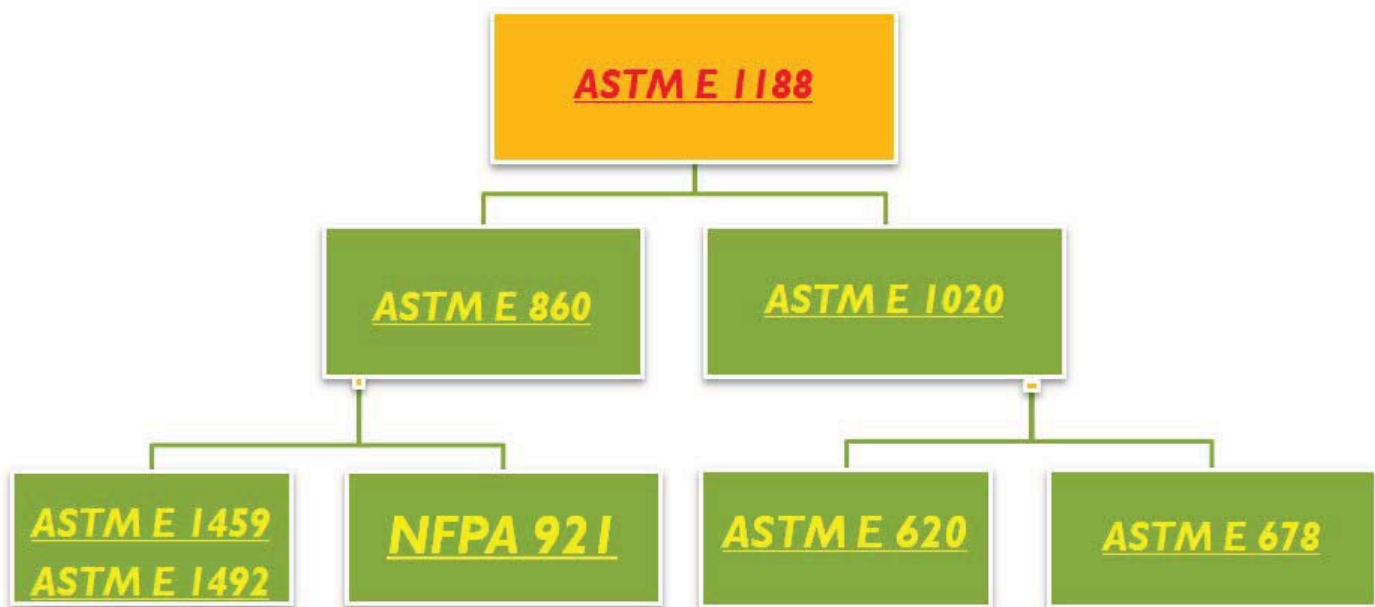


Figure 1. ASTM cited standards when civil or criminal litigation is anticipated.

Several suggestions provide the foundation to support the drafting of an expert report. The use of an investigative protocol to collect and review the case facts will ensure consistency. Peer review, which is often an in-house technical review, can identify areas of improvement. Professional reports include an inventory and description of each document reviewed, an itemization of opinions and supporting documentation, and up-to-date appendices commonly referred to in the report. Investigative protocols are included in several references.^{3,4,5}

An informal survey of successful expert reports reveals the profile of a well-formatted style for expert report. A cover page with case caption identical to the one being litigated should make the expert report appear to be a normal court document. The report should be sealed in accordance with accepted practices.¹ Following the executive summary is the body of the report, using topic headings with short, concise paragraphs in active voice. The report should contain page numbering on the bottom center of the page, and contain “Page 3 of 32” to ensure that all pages are contained. Any exhibits which may be used at a later time in court should be included.

Suggested topic headings include:

1. Disclosure
2. Personal background and qualifications
3. Summary of professional opinions
4. Description of the property destroyed
5. The standard of care in fire investigations
6. The fire incident (include names, table of events)
7. An analysis of other investigations
 - Training and experience in fire investigations
 - Post secondary education
 - Knowledge and certification
 - Expertise in applying a reliable methodology
 - Qualifications
8. Spoliation (if present)
 - Definition, responsibility, and documentation
 - Realization timeframe of potential litigation
 - Notification of interested parties
 - Loss and destruction of critical evidence
 - Timeframe of spoliation of evidence
9. Impact of conducting an independent fire investigation
10. Executive summary with signature/seal

FORMING YOUR OPINION

The key area of an expert report centers on the opinions formed and how they are accurately expressed. These opinions are based upon careful evaluation of all of the case facts along with personal knowledge of the field based upon education, training, experience, and experiment. The opinions also should utilize only facts that are supported by the evidence.

Recommendations to experts when forming an opinion include limiting the scope of your testimony. You should delay forming an opinion until late in the drafting of the report and only after studying the case, running any tests, reviewing other expert reports, and making a site inspection if necessary for you analysis. It is also important to use the “scientific method” and account for all hypotheses reviewed, including the opposing experts.

An example of stating opinions by an engineer:

Based upon the above scientifically accepted and well documented indicators, it is my opinion that:

Opinion #1 – The investigation conducted by XXXXXXXX Engineering into the September XX, XXXX fire involving the XXXX Model XXXX XXXXXXXX fails to meet the minimum professional standards of professional practice for reporting opinions of scientific or technical experts in the field of fire and explosion investigation.

Opinion #2 – The individual and collective actions by XXXXXX; XXXX Casualty Company; XXXXX, Inc.; XXX Engineering; and Attorney XXXX X. XXXX allowed for the spoliation of evidence in this case, in direct violation of the accepted professional standards of conduct.

Opinion #3 – Spoliation of evidence prevented the defendant in this matter, XXXXX Corporation, from conducting a parallel independent fire investigation by its own expert, developing evidence capable of rebutting Mr. XXXX’s hypotheses as well as bolstering Mr. XXX’s original conclusions, and developing alternative theories as to causation.

When stating your opinion, it should support ASTM, NFPA, and U.S. Department of Justice standards, remembering to describe the methodology used. Any statements or conclusions should be clear, explicit, and confident opinions in an ordered format. The appropriate wording for your profession should be used (e.g., engineers: “based upon a reasonable degree of engineering certainty”). Finally, remember to include all of the opinions and exhibits to be introduced at trial.

DEFENDING THE EXPERT FIRE INVESTIGATION REPORT

While the primary purpose of the fire investigator’s expert report is to communicate information, a main goal is to provide sufficient information which would help the expert survive a *Daubert*⁶ challenge during litigation. Several factors can help ensure that this goal is reached. For example, use numerous citations to bolster the report’s credibility. These citations should pinpoint the exact title, author, edition, publisher, and latest year of publication for references. It is important that citations cover the recent search of the literature. Remember to include citations for all referenced NFPA, ASTM, and Department of Justice standards.

When *key definitions* first appear in the report (e.g., fire investigation, flashover, etc.), it is advisable to use the footnoting feature to place the exact text on the same page of the document where it is cited. Footnote every key definition (do not use a glossary) to make it easier to refer to the questions from opposing counsel as to what specific definition that you are using to rely upon.

Experts are advised to limit their reports to specific areas of expertise by stating opinions only in area of their knowledge, education, and experience (stay in your sandbox!). Avoid legal terminology, court citations, and opinions (use NFPA and ASTM cited terminology), and avoid cost estimates unless qualified.

Your *report* should be prepared well-ahead of time, should be thorough and well-documented, and should include accurately footnoted and referenced materials asserting your statements. You should clearly explain your credentials; accurately illustrate and use your methodology; and give emphasis on qualifications, methodology, and deficiencies in the opposing opinions.

Your report should state that your investigation was conducted in accordance with NFPA 921, NFPA 1033, and other applicable ASTM standards. Remember to link the methodology back to the investigator’s qualifications and expertise and include the expert’s peer-reviewed articles that support the approach or opinion. Include other peer-reviewed reports that use a similar analysis and support the methodology; and rule in the substantial cause and rule out all others

Your report should examine the opposing experts, references, methodology, qualifications. Obtain the opposing expert’s publications, expert reports, and depositions to see their level of effort in other cases. Explore if the opposing expert has deviated from standards of conduct (NFPA 921, NFPA 1033, and selected ASTM standards). Identify document examinations, tests, and methodology that the opposing expert should have explored.

Items to watch when *cross-examined* on your report include whether was your dictated report signed by someone else? Nothing is more embarrassing than to not know your deceased clients. Do you know all dates and important names? Other questions include did you read all of the exhibits? What are the definitions of terms (when asked, refer to footnotes)?

Other suggestions include if the opposing counsel appears confused, do not volunteer information; proof-read for spelling, grammar, abbreviations, self-serving, and avoid boilerplate language; avoid predictions; check and re-check all opinions and supporting documentation; ensure that fire investigation “standards of care” are addressed; and keep well-within your area of expertise.

Be prepared to cite supporting standards, guides, and literature – have them with you and sources where counsel can obtain copyright to include in court filings. Do not take marked-up copies of standards to the deposition or court. Avoid legal references which may imply that your counsel supplied to you language for the report, and document inspection of the scene no matter how long after the fire.

Be wary of the requirements to maintain electronic mail and draft reports. Minimize creating discoverable information, including “draft” reports. During the deposition or trial, quickly acknowledge and correct mistakes.



DO YOU WANT THE BEST FIRE INVESTIGATION TRAINING TAUGHT BY TOP INSTRUCTORS?



NATIONAL FIRE, ARSON & EXPLOSION INVESTIGATION TRAINING PROGRAM

CHARLOTTE, NC MARCH 11 - MARCH 15, 2013



NAFI & NFPA Co-Sponsored Program



Internationally recognized authorities will present illustrated lectures on fire and explosion investigation. The training program lecturers are among the premier fire and explosion experts in the world. All technical speakers are members of the NFPA Technical Committee on Fire Investigations or its Task Groups. Nowhere else can the fire and explosion investigator meet and learn from these acknowledged experts in their fields, all gathered together for one training program. The program will focus on proper investigative techniques as outlined in NFPA Fire Code 921 - Guide for Fire and Explosion Investigations. Both basic and advanced lectures will be given. This training program is designed to meet the needs of the newest investigator as well as to enhance the knowledge of the most experienced investigator.

Program Topics will cover

- * Dynamics of Fire Investigation
- * Chemistry and Physics of Fire Behavior
- * Science of Fire Dynamics
- * Basic and Advanced Fire Pattern Analysis
- * Fire/Explosion Scene Investigation Techniques
- * Diagramming of the Fire and Explosion Scene
- * Collection and Preservation of Evidence
- * Origin Determination
- * Evaluation of Fire Causes - Failure Analysis
- * Determination of Electrical Fire Causes
- * Explosion Dynamics and Scene Investigation
- * Effective Fire Case Testimony



Certified Fire Investigation Instructor (CFII): This course centers around instructor methodology as it relates to the field of fire investigation. Topics: Theories of Adult Learning, Evaluation Practice, Instructional Techniques, Objectives, Session and Course Content, and Safety & Standards. The certification examination will be held at the end of this one-day training program.



The program will be held at the
Hilton Charlotte Executive Park, 5624 Westpark Dr., Charlotte, NC 28217
Telephone: 704-527-8000



For further information or to register for this NAFI & NFPA Co-Sponsored Program, Contact:
FIRE SEMINAR - 857 Tallevast Road Sarasota, FL 34243 Phone 941-355-9079

WWW.NAFI.ORG

Avoid unprofessional comments on the experts other than you do not agree on their findings or conclusions. Avoid labeling the report “confidential,” “secret,” or “client privileged”. Avoid allegations of ethical violations against other witnesses.

PENDING CHANGES

Recent changes to FRCP Rule 26 approved by the U.S. Judicial Conference in September 2009 and were submitted to the U.S. Supreme Court. On April 28, 2010, the Supreme Court of the United States approved amendments to, among other, Civil Rules 26 and 56, effective December 1, 2010, unless Congress enacts legislation to the contrary.

Under the proposed amendments to Rule 26, attorney-expert communications would come under the protection of the work-product doctrine. Additionally, the new Rule 26, if passed by Congress, will prohibit discovery of draft expert reports and further limit discovery of attorney-expert communications.

SUMMARY

The drafting and issuance of expert reports, and the content thereof, can have a profound impact on litigation. Care must be taken to ensure that all issuances by the expert conform to accepted standards and legal requirements. Beyond those standards and requirements, however, a systematic procedure should be utilized for formatting your expert report and ensuring that its contents are presented correctly, are substantively accurate, describe how the expert properly reviewed information per ASTM and NFPA standards, and clearly state the expert’s opinions. Finally, the report can be used as a tool of professionalism by comprehensively identifying the expert’s qualifications.

For further Reading, see the following references:

Babitsky, S. & Mangraviti, Jr., J.J. (2002), *Writing and Defending Your Expert Report: The Step-by-Step Guide with Models*. Falmouth MA, SEAK, Inc.

Wisehart, F.A. *Fundamentals of Writing Expert Reports*, Cornell University www.wisehart-wisehart.com/.

Wivell, M. K.. *Deliver a Daubert-Proof Expert Report*, Trial, Dec 1, 2003.

Ambrogi, R. “*Rule 26: Major Changes for Attorneys and Experts.*” (BullsEye: IMS ExpertServices™ February 2010)

Poyner, R. (2005). *Expert Witness Handbook: Tips and Techniques for the Litigation Consultant*, Para Publishing, Santa Barbara, CA.

ABOUT THE AUTHORS

David J. Icové, PhD, PE, CFEI is a Research Professor in the Department of Electrical Engineering and Computer Science at the University of Tennessee, located in Knoxville, Tennessee. Dr. Icové is the co-author of several leading textbooks in the fire investigation field. He is a Registered Professional Engineer and a Certified Fire and Explosion Investigator (NAFI) and can be contacted at icove@utk.edu.

Brian P. Henry, JD, CFEI is an attorney with the law firm of Smith, Rolfes & Skavdahl Co., LPA of Sarasota, Florida, and is in the firm’s Fire and Explosion Group. His practice focuses on fire science litigation, and he serves or has served as national counsel to various companies in regard to fire science issues. His practice also includes the direct representation of expert witnesses who are challenged under Federal Rule 702, Daubert, or state-equivalent rules. He is a Certified Fire and Explosion Investigator, has authored a number of articles on fire science issues, and is a regular speaker at fire science seminars across the country.

REFERENCES

- ¹ D.J. Icové and G.A. Haynes. 2007. “Guidelines for Conducting Peer Reviews of Complex Fire Investigations.” Fire and Materials Conference, San Francisco, California, January 29-31, 2007.
- ² *Standard for Professional Qualifications for Fire Investigator*, 2009 Edition National Fire Protection Association, Quincy, MA 2009.
- ³ NIJ’s “*Fire and Arson Scene Evidence: A Guide for Public Safety Personnel*” (NFPA 906 forms in Appendix A)
- ⁴ J.D. DeHaan. Kirk’s Fire Investigation “*Field Interview and Incident Report Forms*” in Appendix, Prentice Hall, 2006.
- ⁵ ASTM E 620. Section 4.4.1.
- ⁶ Icové, D.J. and M.W. Dalton. 2008. “*A Comprehensive Prosecution Report Format for Arson Cases.*” (ISFI 2008, International Symposium on Fire Investigation Science and Technology, Cincinnati, Ohio, May 19-21, 2008)
Daubert v. Merrell Dow Pharmaceuticals, Inc., 509 U.S. 579, 589 (1993)

An exclusive preview...

ISFI 2012

THE STAMP STUDENT CENTER
UNIVERSITY OF
MARYLAND,

COLLEGE PARK,
MARYLAND, USA



OCTOBER 15-17, 2012

INTERNATIONAL
SYMPOSIUM ON
FIRE INVESTIGATION
SCIENCE & TECHNOLOGY



5th Biennial

INTERNATIONAL SYMPOSIUM ON FIRE INVESTIGATION SCIENCE & TECHNOLOGY

ISFI 2012 brings together internationally known and widely respected fire investigation professionals to present and discuss the cutting edge of fire investigation science, research, technology, and methodology. In addition to an unparalleled educational schedule, the ISFI 2012 schedule is designed with numerous social opportunities for networking, debate and fun.

The popular ISFI social gatherings are returning, including the Sunday night Pre-Symposium Informal Gathering, the Monday evening Cocktail Reception, and the Tuesday evening Gala “Black Tie” cocktail hour and dinner.

CEU’s and college credits for attendance at ISFI 2012 are generously being provided by Eastern Kentucky University. This course completely fulfills the requirements for CFEI recertification.

www.ISFIconference.com

THE PROGRAM

Each day of ISFI 2012 starts with two plenary main sessions. These lectures attended by the whole delegation feature engaging lectures by pre-eminent fire professionals including John Lentini, Greg Gorbett and Ron Hopkins. After lunch, the format switches to breakout sessions.

ISFI 2012 will feature over 50 breakout sessions over its three day span. Delegates may move between breakouts to customize their ISFI experience. A complete list of accepted papers is available on our website at www.isficonference.com/ISFI2012_Papers. The symposium language is English.



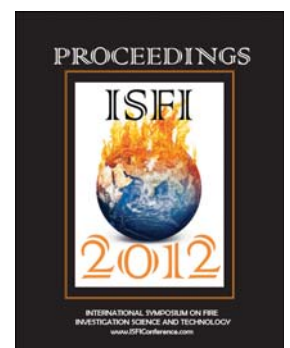
VENUE & LODGING

The Conference: ISFI 2012 lectures, breakouts, meals and social events will be hosted by the University of Maryland - Stamp Student Center. The Marriott Hotel will provide a complimentary shuttle to the Stamp Student Center for all delegates and complimentary hotel parking is available for any delegates commuting to ISFI 2012.

Lodging: Delegate lodging is available through Marriott Inn and Conference Center, with a special rate of \$139 per night. Reservations should be made directly with the hotel: The Inn and Conference Center, 3501 University Blvd., E, Hyattsville, Maryland, USA 1-301-985-7300 using discount code “nafnafb”.

ISFI PROCEEDINGS

Papers presented at the conference are published in the official Conference Proceedings. Each delegate receives a bound copy of the ISFI 2012 Proceedings. Additional bound copies or CD versions of the Proceedings may be purchased.



Over the last decade the ISFI symposia have emerged as the pre-eminent venue for technology transfer in the field of Fire Investigation.

NETWORKING, SPONSORSHIP & ADVERTISING

ISFI 2012 provides a unique and highly prestigious opportunity to showcase your company or services to the elite members of the Fire Investigation and Fire Science professions. Our Sponsors and advertisers, at all levels, receive generous exposure and recognition. Gain exposure by hosting a social event, providing handout materials or working with us to create a custom advertising solution.

Exhibits Hall: Features displays from prominent Associations, Fire Investigation Firms, Law Firms and Universities. Many ISFI 2012 social events are centered on the Exhibits Hall for maximum return on investment. ISFI Delegates receive a generous discount on exhibits space. All sponsorships and exhibit reservations should be made by September 21, 2012. More information and forms are available at www.isficonference.com.

ISFI 2012 REGISTRATION

WWW.ISFICONFERENCE.COM

PARTICIPANT INFORMATION

Name _____
(As you wish it to appear on certificate)

Name _____
(As you wish it to appear on nametag)

NAFI Number _____ NFPA Number _____

Company/Fire or Police Department _____

Title _____

Street _____

City/State/Zip _____

Country _____

Telephone _____ Fax _____

Email Address _____

REGISTRATION INFORMATION

ISFI October 15-17, 2012

Delegate Registration (\$800) _____

Presenter Registration (\$700) _____

*Each Registration Includes Parking & Meal Package
(Breakfast, Lunch, and Snacks) for the Delegate*

OTHER ITEMS

Gala Tickets, Tuesday, October 16, 2012 (\$80 per person) _____

Additional Meal Package for Spouses/Guests (\$240 per person) _____

Additional Book of Proceedings (\$100) _____

TOTAL DUE \$ _____

PAYMENT OPTIONS

Registrations may be cancelled or changed until September 21, 2012; thereafter, individual registrants may be substituted, but refunds or cancellations will not be made.

- 1) Credit Card: VISA M/C
Cardholder Name _____
Card No. _____ Exp. Date _____
CCV# _____ Billing Zip Code _____
Signature _____
- 2) Check Enclosed (payable to Fire Seminar) # _____ Amount _____
- 3) If you wish to be invoiced, please provide billing information.
Invoice - P/O Number (if available) _____
Company _____
Street _____
City/State/Zip _____
Email _____

Mail or Fax this registration and payment to:
Fire Seminar,
857 Tallevast Road,
Sarasota, Florida 34243
Phone: 941-355-9079 Fax: 941-351-5849
email: isficonference@hotmail.com

ISFI 2012 Accepted Abstracts

FIRE INVESTIGATIONS INVOLVING METAL HALIDE LAMPS

Rachel Abrecht-Litchfield
Windsor, CT, USA

VARIANCES BETWEEN STANDARDS: CURRENT DIFFERENCES BETWEEN UL AND BSI . A CAMPAIGN TO IMPROVE UK PRODUCT FIRE RESISTANCE.

Michael Beasley
London, England, UK

FIRE EFFECTS ON RECEPTACLES

Matthew E. Benfer
Baltimore, MD, USA

INVESTIGATING THE BEHAVIOR OF REINFORCED CONCRETE STRUCTURES SUBJECTED TO POST EARTHQUAKE FIRE

Behrouz Behnam
Brisbane, Queensland, Australia

THE ARSON RESEARCH PROJECT

Paul Bieber
San Mateo County, California, USA

METALLUGY AND FIRE INVESTIGATION

Elizabeth Buc
Livonia, MI, USA

CURRENT RESEARCH AND FUTURE EXPECTATIONS OF RSE BURNING

Mark A. Campbell
Denver, CO, USA

COMPARTMENT FIRE BEHAVIOR INVOLVING ELEVATED FUELS

Steven Carman
Grass Valley, CA, USA

EXPERTS BEWARE: IGNORING THE SCIENTIFIC METHOD CAN BE HAZARDOUS TO YOUR TESTIMONY – AN UPDATE ON THE LAW

Karrie Clinkinbeard, J.D.
Kansas City, MO, USA

CURRENT FUEL SYSTEM TECHNOLOGY

Cam J. Cope
Conroe, TX, USA

CURRENT STATE LICENSING REQUIREMENTS FOR PRIVATE FIRE INVESTIGATORS IN THE UNITED STATES: 2012

Ryan Cox
Fort Wayne, IN, USA

REPOSITIONING OF HUMAN BODIES DURING FIRES

John D. DeHaan, Ph.D
Vallejo, CA, USA

LIGHTNING RELATED STRUCTURE FIRES

Andrew D. Ellison
Natick, MA, USA

INVESTIGATION OF CARBON MONOXIDE INCIDENTS

Andrew D. Ellison
Natick, MA, USA

OPTIMIZATION OF CARBON MONOXIDE DETECTOR LAYOUT IN RESIDENTIAL STRUCTURES

Derek Engel
Bethesda, MD, USA

QUANTIFYING IGNITABLE LIQUIDS IN FIRE DEBRIS: POSSIBLE OR PROBLEMATIC?

Michelle Evans
Ammendale, MD, USA

FACTORS AFFECTING THE COMBUSTION OF GAS APPLIANCES AND THE GENERATION OF CARBON MONOXIDE

John M. (Jay) Freeman, Jr
Littleton, CO, USA

EVALUATING THE DISPERSION OF A GAS RELEASE IN A CLOSED ENVIRONMENT WITH LIMITED, PASSIVE VENTILATION

Filippo Gavelli
Bethesda, MD, USA

INVESTIGATION OF THE IGNITION OF GASOLINE-SOAKED CLOTHING WITH AN OPEN FLAME.

Justin Geiman
Beltsville, MD, USA

SAFETY ANALYSIS OF THE PRACTICE OF VENTING GAS-FIRED APPLIANCES INTO SCREENED ENCLOSURES

Jayson Geiser
Bethesda, MD, USA

CAPACITOR FAILURES ON PSC MOTOR CIRCUITS

Mark Goodson
Denton, TX, USA

THE APPLICATION OF CT X-RAY TO ANALYSIS OF ELECTRICAL COMPONENTS AFTER A FIRE

Mark Goodson
Denton, TX, USA

FIRE PATERNS ANALYSIS

Greg Gorbett
Richmond, KY, USA

ROAD FLARE TEST BURNS

David M. Hallman
Plymouth, MN, USA

HOT SURFACE IGNITION OF BEARING GREASE IN HORIZONTAL AND VERTICAL ORIENTATIONS

Ryan J. Hart
Warrenville, IL, USA

MYTHS AND MISCONCEPTIONS: HAS NFPA 921 EFFECTIVELY ERADICATED THEM?

Terry-Dawn Hewitt
Denver, CO, USA

FULL SCALE FIRE BURN PATTERN UPDATE

William Hicks
Richmond, KY, USA

COMPLEX INVESTIGATIONS

Ron Hopkins
Richmond, KY, USA

CHINESE PRAYER ALTAR FIRES

Lim Beng Hui
Singapore, , Singapore

FORENSIC INVESTIGATION TECHNIQUES FOR INSPECTING ELECTRICAL CONDUCTORS INVOLVED IN FIRES

Nasir Hussain
Columbia, MD, USA

EXPLOSION SEVERITY: PROPANE VERSUS NATURAL GAS

Alfonso Ibarreta
Natick, MA, USA

A GAP ASSESSMENT OF THE FORENSIC FIRE ANALYSIS OF PRE- AND POSTFLASHOVER FIRES USING VISUAL, IMAGE PROCESSING, LASER SCANNING, AND FIRE MODELING APPROACHES

David J. Icove
Knoxville, TN, USA

FUEL GAS LEAKS RESULTING IN EXPLOSIONS AND FIRES HAVE OCCURRED DUE TO FAILURES AT THE SHA/PE TUBING CONNECTION

Zachary J. Jason, PE
Littleton, CO, USA

STRUCTURAL FIRES RELATED TO ELECTRICAL SERVICE PROBLEMS AND FAILURES

Robert P. Juergens
St, Louis, MO, USA

EXAMINING THE PHENOMENA OF ARCING THROUGH CHAR IN A VARIETY OF NON-METALLIC SHEATHED CABLES.

Michael R. Keller, P.E.
Ammendale, MD, USA

THE MYTHS AND MYSTERIES OF NFPA 921

Patrick M. Kennedy
Sarasota, FL, USA

USING CONFOCAL RAMAN MICROSPECTROSCOPY TO IDENTIFY THE MATERIALS IN A FIRE COMPARTMENT FROM THE DEBRIS

Tanya Kerr
St. Andrew, , Jamaica

THE USE AND MISUSE OF ENGINEERS IN FIRE INVESTIGATION

Richard Kovarsky
Cincinnati, OH, USA

QUANTUM-CHEMICAL RESEARCH OF CHEMICAL SCAVEGING EFFECTS IN RADICAL REACTIONS

Vitalina Kukueva
Cherkassy, Ukraine, Ukraine

INNOVATIVE DOCUMENTATION TECHNIQUES FOR FIRE SCENE INVESTIGATION

Thomas Lancaster
Richmond, KY, USA

THE POSSIBILITY OF IGNITION BY A CIGARETTE AND BURNED TRASH IN THE FORM OF STUDY

Lee, Seokdong
Daedeok-gu, Daejeon, South Korea

TOTALITY OF THE EVIDENCE" OR CONTEXTUAL BIAS: WHERE DO YOU DRAW THE LINE?

John Lentini
Big Pine Key, FL, USA

SMALL ELECTRIC MOTOR FIRES

Joel Liebesfeld
Randolph, NJ, USA

LIGHTNING STRIKES: ELECTRICAL RESPONSE OF CSST VS. BLACK IRON PIPE

Jeffrey E. Lindsey, PE
Columbus, OH, USA

SMOKE AND MIRRORS: CIRCUMVENTING NFPA 921 IN DAUBERT CHALLENGES

Wayne J. McKenna Esq., B.A. (Spec.), LL.B.
Denver, CO, USA

FIRE DEBRIS COLLECTION PROCEDURES

Christopher Mealy
Baltimore, MD, USA

DEPTH OF CALCINATION PROCEDURES

Christopher Mealy
Baltimore, MD, USA

FIRE EFFECTS ON NEW REPLACEMENT HIGH EFFICIENCY LIGHTING

Richard J. Meier
Sarasota, FL, USA

FIREPLACE CHIMNEYS AS A COMPETENT IGNITION SOURCE FOR CELLULOSE INSULATION

Todd S. Metzger, P.E.
Wentzville, MO, USA

FUEL GAS LEAKAGE POTENTIAL FROM COMMON THREADED PIPE CONNECTIONS, FOR CONSIDERATION IN FIRE/EXPLOSION INVESTIGATIONS

Kim R. Mniszewski, P.E.
Western Springs, IL, USA

CASE REVIEW...FACT...FICTION...FANTASY

Jeff Morrill
Cartersville, GA, USA

AN ANALYSIS OF A FILICIDE BY FIRE

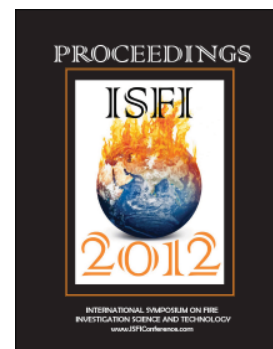
James G. Munger, PhD
Cullman, AL, USA

VALIDATION OF FLACS-FIRE FOR JET FIRES UNDER VENTILATION-CONTROLLED CONDITIONS

Deiveegan Muthusamy
Bergen, Hordaland, Norway

IN-SITU CONCRETE STRENGTH TESTING AS A TOOL IN FIRE INVESTIGATION

Michael O'Connor
Sacramento, CA, USA



EXPLOSION OF 500 KV/500 MVA TRANSFORMER BUSHING ON ELECTRICAL GRID SUBSTATION

Ir. Adrianus Pangaribuan, MT
Jakarta, Selatan, Indonesia

FIRE & EXPLOSION INSIDE CHEMICAL REACTOR ON CHEMICAL MANUFACTURING

Ir. Adrianus Pangaribuan, MT
Jakarta, Selatan, Indonesia

FIRE PATTERN TESTS

James Pharr
Richmond, KY, USA

ANALYSIS OF SUSCEPTIBILITY TO IGNITION OF SELECTED INDUSTRY DUST FROM A HEATED SURFACE – COMPARATIVE THE VALUE OF MINIMAL IGNITION TEMPERATURES OF A DUST LAYER AND CLOUDS

Marzena Polka
Warsaw, Mazowieckie, Poland

FLASHOVER

James G. Quintiere
College Park, MD, USA

IGNITABLE LIQUID RESIDUE DISTRIBUTION IN POUR PATTERNS AS AFFECTED BY SUBSTRATE TYPE AND IGNITABLE LIQUID CLASS

J. Graham Rankin, Ph.D
Huntington, WV, USA

ARC MAPPING ELECTRICAL FAULTS IN COMPONENTS

Shawn P. Ray
Portland, OR, USA

USE OF TGA IN FORENSIC INVESTIGATION : STUDY OF HUMAN TOOTH EXPOSED TO FIRES

Camille Riera
Paris, , France

INDUSTRIAL INCIDENT INVESTIGATION TECHNIQUES – TIME LINES, POSTULATION SPREADSHEETS, FAULT TREES

Thomas Rodante
Colleyville, TX, USA

POTENTIAL CONSEQUENCES OF COMBUSTIBLE DUST FIRES

Marc G. Sáenz
Washington, DC, USA

SOLID FUMIGANTS AS AN IGNITION SOURCE IN GRAIN BIN FIRES

John L. Schumacher
Littleton, CO, USA

INVESTIGATION OF ASBESTOS CONTAMINATED FIRE AND EXPLOSION SCENES

James H. Shanley, Jr., PE,
Windsor, CT, USA

CASE STUDIES OF LOCALIZED FLOOR BURN-THROUGH COULD BE CAUSED BY CERTAIN ORDINARY COMBUSTIBLE MATERIALS

David Sheppard
Ammendale, MD, USA

A STRANGE NEW SOURCE OF STRUCTURE FIRE IGNITION

Ronald Simmons
Kingwood, TX, USA

THE DEATH OF NEGATIVE CORPUS

Dennis W. Smith
Ft. Wayne, IN, USA

VEHICLE FIRE BURN PATTERN STUDY: PART 2

Nicholas J. Smith
St. Louis, MO, USA

EXPERIMENTS TO DETERMINE WHETHER A 2 GALLON GASOLINE CONTAINER FILLED WITH A DIESEL-GASOLINE MIXTURE CAN PRODUCE A FLAME JET FROM THE OPEN MOUTH OF THE CONTAINER WHEN POURED OVER AN OPEN FLAME.

Adam St. John, PE
Beltsville, MD, USA

ANALYSIS OF THE APPLICABILITY AND LIMITATIONS OF ARC MAPPING IN VEHICLE AND EQUIPMENT FIRE INVESTIGATION

Douglas R. Stahl, PE
Ft. Wayne, IN, USA

RESEARCH AND DEVELOPMENT ACTIVITIES IN FIRE MODELLING FIELD IN ORDER TO ASSESS THE USE OF FIRE SCENARIO SIMULATION IN INVESTIGATION FRAMEWORK

Aurélien Thiry
Paris, France

EVALUATING FIRE DAMAGED REGULATORS: HOW RELIABLE IS POST-FIRE TESTING

Jerry R. Tindal
Irmo, SC, USA

FIRE INVESTIGATION ORIGIN DETERMINATION SURVEY RESULTS

Andrew Tinsley
Richmond, KY, USA

CARELESS COOKING FIRES

Robert Trenkle
Redford Township, MI, USA

PROPANE RELEASE BEHAVIORS FROM OVERFILLED TWENTY-POUND CYLINDERS

Yunyong Utiskul
Bowie, MD, USA

PRELIMINARY RESULTS OF THE AFFECT OF CARPET PAD SEAMS COMPARED TO IGNITABLE LIQUID POURS, FLOOR FIRE PATTERNS IN POST-FLASHOVER FIRES

Christopher Wood
Tewksbury, MA, USA

*More Information
available at
www.isficonference.com*

TIPS FOR MAKING RECERTIFICATION PAINLESS.

Did you know the NAFI Office processes 20-30 recertifications per week? That's a lot of paperwork!

Did you know that in any given week 3-5 recertifications are rejected? Don't be one of them.

Even after 10 years, the recertification process continues to be a challenge for both members and staff. Continuing education is the **ONLY** way to recertify. The purpose of recertification is to ensure that NAFI CFEI's keep abreast of the latest in fire investigation science and technology.

There are **NO** provisions for professional practice, writing or publishing articles, industry committee participation. It's **TRAINING, TRAINING, TRAINING!** Add all the supporting documents you think we need to review. Your recertification submissions become part of your "permanent record". They are archived and are subject to subpoena.

We know training is expensive, but we are only asking for 40 hours over 5 years. That works out to 1 day a year. It is to your benefit, keeps you current, looks good on your cv, and classes are always great for networking and exploring new ideas. Plus, having your hat handed to you in the courtroom can be **VERY** expensive!

Recertification requirements (in a nutshell)

1 Multi-day NAFI program (Seminars you find advertised on NAFI.org only)

Or

40 Hours of NFPA 921 based fire investigation training from anywhere else, including PATC, or other fire groups, even if they are offering the CFEI exam; CFI Trainer.net counts, too.

Or

20 Hours teaching a NFPA 921 based fire investigation course.

For a complete list of recertification rules and requirements visit:<http://www.nafi.org/files/forms/RecertificationCriteria11040530204.pdf>

The Recertification form is available 24/7 at <http://www.nafi.org/files/forms/Recertform11040530155.pdf>



Top three reasons recertification forms are rejected.

3. No supporting documents!
2. Not enough hours!
1. No Recert Form
(kind of a Duh!, we know!)



5 tips for a successful recertification.

1. Use the form
2. List each class you wish to be considered on the form.
3. Attach supporting documents for each class.
4. Total your hours (we have to return forms that are not complete)
5. Allow enough time. Send your form in 2-3 weeks before your expiration date.

2012 Meeting Minutes

NAFI Business Meeting
 August 8, 2012
 7:00 PM
 Hyatt Regency Ballroom
 Sarasota, FL

1. Call to order. Patrick Kennedy -
 Introduction of 2012 Officers
 President – Ron Hopkins
 Vice President – Michael Beasley
 Treasurer – Richard Meier
 Secretary - Nick Smith
 Chairman of the Board of Governors – Patrick Kennedy
 Vice Chair of the Board of Governors – Kathryn Smith

Introduction of the Board Members Present
 Education Committee Chair - Greg Gorbett
 Fire Service Committee Chair – William Hicks
 Fire Standards Committee Chair – Randy Watson
 Finance Committee Chair – Christine Meier
 Membership Committee Chair – Heather Kennedy
 Ryan Cox – Member, Board of Directors

2. Reading of Minutes of previous meeting.
 Minutes were posted. Motion to accept the minutes as published in the Fall 2011 Newsletter.
 Motion to accept R. Watson
 2nd G. Gorbett

3. Report of the Membership Services Office, Christine Meier
 Report to update those present of the current membership numbers.
 Members in 41 Countries
 As of 08-08-12 6060
 Renewals trending up
 Accepted as Read

4. Report of Officers.

Chair of the Board of Governors, Patrick Kennedy
 The Board of Governors and Board of directors met and ratified the revision of the constitution and bylaws of NAFI. The bylaws were modernized to reflect changes in the way the association does business.

The Board of Directors and the officers of NAFI use the Training Programs and various public events as a conduit to receive Member feedback on Association Policies.

President, Ron Hopkins

The Board of Governors and Board of directors met and ratified the revision of the constitution and bylaws of NAFI. The bylaws were modernized to reflect changes in the way the association does business. Changes include expanding the role of the website in day to day operations; the addition of recent and future Certification Programs and the renaming of the National Certification Board to the International Certification Board to better reflect the international nature of our membership.

Vice President, Mick Beasley – No Report

Treasurer, Rich Meier
 Report of the Association Accountants Read (see below)
 Presented as a Motion
 2nd G. Gorbett

Secretary, Nick Smith – No report

SANDONATO & CO., P.C.
 CERTIFIED PUBLIC ACCOUNTANTS
 3000 DUNDEE RD., SUITE 208
 NORTHBROOK, IL 60062
 847-205-5055

Board of Directors
 National Association of Fire Investigators
 Sarasota, Florida

Gentlemen:

We have compiled the accompanying Statement of Receipts and Disbursements of the National Association of Fire Investigators, as of December 31, 2011, in accordance with the standards as established by the American Institute of Certified Public Accountants.

A compilation is limited to presenting in the form of financial statements information that is the representation of management. We have not audited or reviewed the accompanying Statement of Receipts and Disbursements and accordingly cannot express an opinion or any other form of assurance thereon.

Sincerely,
Sandonato and Company, P.C.
 Northbrook, Illinois
 July 31, 2012

NATIONAL ASSOCIATION OF FIRE INVESTIGATORS
 SARASOTA, FLORIDA

STATEMENT OF CASH RECEIPTS AND DISBURSEMENTS FOR THE YEAR ENDED DECEMBER 31, 2011

| | |
|---|---------------|
| RECEIPTS: | |
| Membership dues, seminars, certifications | \$450,333 |
| Logo items | <u>22,425</u> |
| | 472,758 |

| | |
|---|---------------|
| DISBURSEMENTS: | |
| Publication, certification and seminar expenses | 239,557 |
| Logo items | 17,940 |
| Office, accounting, and other administrative | 196,676 |
| Outside professionals | <u>21,819</u> |
| | 475,992 |

| | |
|---|----------------|
| Excess cash disbursements over cash receipts | 3,234 |
| Cash balance – January 1, 2011 | <u>106,762</u> |
| Total cash to be accounted for at December 31, 2011 | <u>103,528</u> |

| | |
|-----------------------------------|----------------|
| Cash in bank at December 31, 2011 | <u>103,528</u> |
| Net Difference | <u>\$ 0</u> |

Sandonato & Co., P.C.
 Certified Public Accountants

ARE YOU PLANNING YOUR TRAINING BUDGET FOR 2013?

Plan ahead with NAFL top-quality training!



INTERNATIONAL FIRE, ARSON & EXPLOSION INVESTIGATION TRAINING PROGRAM

March 11 - March 15, 2013
Hilton Charlotte Executive Park,
Charlotte NC Hotel
Room Rate \$115.00

This program presents a broad overview of NFPA 921 and proper investigative techniques.

Add-on programs: Certified Fire Investigation Instructor (CFII) and Computer Fire Modeling

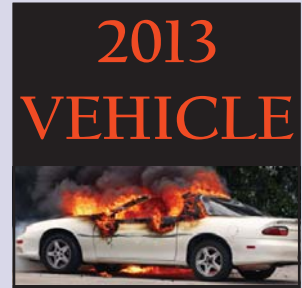


INTERNATIONAL ADVANCED FIRE, ARSON & EXPLOSION INVESTIGATION TRAINING PROGRAM

August 6 - August 8, 2013
Hyatt Regency Sarasota, Sarasota, FL
Hotel Room Rate \$135.00

This advanced program delves deeper into specific topics and situations, emphasizing advanced concepts.

Add-on programs: Certified Fire Investigation Instructor (CFII), Computer Fire Modeling and Fire Analysis Litigation



2013 VEHICLE FIRE, ARSON & EXPLOSION SCIENCE & TECHNOLOGY SEMINAR

September 30 - October 3, 2013
Hilton Lexington/Downtown,
Lexington KY
Hotel Room Rate \$125.00

The 7th Vehicle Fire, Arson and Explosion Investigation Science & Technology Seminar's focus is on proper investigation techniques for motor vehicles as outlined in Chapter 25 - Motor Vehicle Fires of NFPA Fire Code 921 - Guide for Fire and Explosion Investigations, 2011 edition.

2013 Prices - Same Great Value

NAFI Training Programs - \$700.00 Early Registration*
Certified Fire Investigation Instructor (CFII) - \$250.00
Computer Fire Modeling - \$250.00
Fire Analysis Litigation - \$250.00

New NAFL memberships - \$45.00
CFEI exam for Program Participants - \$75.00

*See each seminar for early registration cut-off date.



Co-sponsored with the NFPA



For more information or to register, contact:

NATIONAL ASSOCIATION OF FIRE INVESTIGATORS

857 Tallevast Road, Sarasota, FL 34243

941-355-9079

www.NAFI.org

2012 Meeting Minutes

5. Report of Committees. (Presented as Motions)

Nominations and Elections, Walt Godfrey

Motion: Andrew Tinsley, Eastern Kentucky University nominated as Member, Board of Directors

2nd R. Meier

Accepted Unanimously

Finance Committee, Christine Meier

No Additions to the Treasurer's Report

Publications and Marketing, Christine Meier

Newsletter – changes -- mailed only to North America, PDF email to foreign

Wed Development continues

2nd R. Meier

Accepted Unanimously

Legal Committee, Brian Henry, Esq. – No Report

International Certification Board, Ron Hopkins

a. Certified Fire and Explosion Investigator (CFEI) 1982

4615 Currently Certified

CFEI's in 39 countries

Approximately 50 seminar participants will be completing the exam Thursday afternoon.

b. Certified Fire Investigation Instructor (CFII) August, 1984

594 Currently Certified

20 Completed the CFII course August 6, 2012

c. Certified Vehicle Fire Investigator (CVFI) 2002

922 Currently Certified

Next CFVI examination will be given during the Vehicle Fire Investigation seminar, October 2013.

d. Current Members with all 3 certifications, 206

e. Examination and Certification Process

CFEI Exam continues to undergo review

CFEI Guidelines

CFEI Proctor Designations

Recent Email information now required

2nd M. Hennessy

Accepted Unanimously

Training and Education Committee, Greg Gorbett

Upcoming Seminars

ISFI

October 15-17, 2012

University of Maryland, College Park, MD USA

2012 Canadian Advanced Fire, Arson and Explosion

Investigation Training Program

October 21-26, 2012

Toronto, ON, Canada

2013 International Fire, Arson and Explosion Investigation

Training Program

March 11-15, 2013

Charlotte, NC, USA

2013 International Advanced Fire, Arson and Explosion

Investigation Training Program

August 6-8, 2013

Sarasota, FL, USA

2013 Vehicle Fire, Arson and Explosion Investigation Training

Program

September 30 – October 2, 2013

Lexington, KY, USA

Patrick Kennedy announced the creation and NAFI's Attendance at the upcoming National Organization Summit on Fire Investigation in conjunction with ISFI.

2nd P. Carolan

Accepted Unanimously

Standards Committee, Randy Watson (Combined with report of Standards Liaison)

NFPA 1033 and NFPA 921 are "in Cycle" Comments for 1033 closed August 31st, Comments on 921 close in October. Both Documents are scheduled for a 2014 release date.

P. Kennedy reported that NAFI has been well represented at NFPA 921 and 1033 with unblemished regular attendance and vigorous promotion of NAFI's positions on key industry concepts.

2nd R. Meier

Accepted Unanimously

Fire Service, Bill Hicks - None

6. Report of the Standards Liaison, Patrick Kennedy

See Above

7. Unfinished business.

No Old Business

8. New business.

Resolutions – None

Elections

Andrew Tinsley, Member, Board of Directors

Chairs Moves

2nd R. Watson

Accepted Unanimously

Announcement that NAFI will be receiving an invitation to cooperate with European Fire Investigation groups.

9. Good and Welfare of the Order.

10. Adjournment.

Motion R. Watson

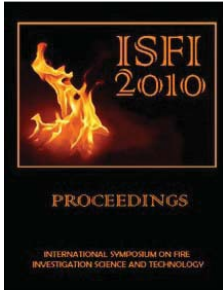
Accepted Unanimously At 7:59 PM

Meeting Attendance is on file at NAFI Office.



International Symposium on Fire Investigation

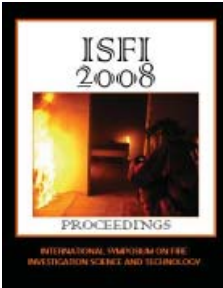
Couldn't make it to ISFI 2010? Purchase the Official Proceedings.
 Each Proceedings Edition includes full text of all the papers presented at the International Symposium on Fire Investigation Science and Technology.



ISFI 2010 Proceedings



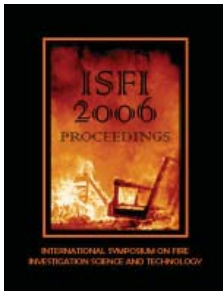
The 2010 ISFI proceedings are now available for order in print or on CD at a special price. Fully searchable and printable, all the papers are on the CD in Adobe PDF format. Contains 56 Research Presentations from the conference. 642 Pages.
Book/CD Version both available.



ISFI 2008 Proceedings



The 2008 ISFI proceedings are now available in the Electronic Edition on CD. Fully searchable and printable, all the papers are on the CD in Adobe PDF format. 393 pages.
Sorry, print version is no longer available.



ISFI 2006 Proceedings



The 2006 ISFI proceedings are now available in the Electronic Edition on CD. Fully searchable and printable, all the papers are on the CD in Adobe PDF format. 490 pages.
Sorry, print version is no longer available.

Build your library at a special price

Get all three CD editions and save \$50.00. We've combined the 2006, 2008 and 2010 ISFI Proceedings on CD in one package deal for only \$250.00 plus shipping. Order Item #3008-3CDS.

| | |
|---------------------------------------|----------------|
| ISFI 2010 Proceedings | |
| Book | \$100.00 _____ |
| CD | \$100.00 _____ |
| ISFI 2008 Proceedings | |
| CD | \$100.00 _____ |
| ISFI 2006 Proceedings | |
| CD | \$100.00 _____ |
| 3 CD Deal ('06, '08 & '10) | |
| CD | \$250.00 _____ |
| Subtotal | _____ |
| Shipping (US) | \$8.00 _____ |
| Shipping (Intl) | \$10.00 _____ |
| Total | _____ |

FL and IL residents please add sales tax.
 Allow 4 weeks for delivery.
 Prices valid while quantities last.

Mail or Fax orders

Name _____
 Company/Institution/Department _____
 Street _____
 City _____ State _____ Zip _____ Country _____
 Telephone _____ Fax _____
 Email Address _____
 Visa/Mastercard _____ EXP. ____/____ (MM/YY)
 CVV ____ Billing Zip Code _____
 Name on Card _____ Signature _____
 Check/Money Order Enclosed _____

Members order on
 online at
www.nafi.org/store

Also by mail
**857 Tallevast Road
 Sarasota, FL 34243**

by phone
**1-877-506-NAFI
 1-941-359-2800
 9am - 5pm EST**

by fax
**1-941-351-5849
 24 Hours a Day**

Order on-line now at www.nafi.org/store

Announcing NAFI Gear *Deluxe* by **LANDS' END**

We've partnered with Land's End, the leader in high quality business apparel to offer our members a stylish new line of logo items called *NAFI Gear Deluxe*.

NAFI Gear Deluxe offers great styles, a wide range of colors and sizes colors and embroidered NAFI logos. For the first time, we're offering items in women's styles and sizes, as well!



Access to the shop is exclusively for NAFI Members. You will find the shop by logging in to your NAFI Membership at NAFI.org, visiting our member store and clicking the NAFI Gear Deluxe button.



These orders are managed by Lands' End and supported by Lands' End renowned customer support.

**New NAFI
GEAR
for 2011**



**New NAFI
GEAR
for 2011**

Order on-line now at www.nafi.org/store



**New Designs for
CFEI and CVFI Emblems**

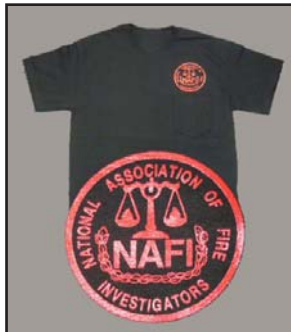
\$5.00 each



NAFI Travel Mug

This red stainless steel, insulated travel mug is great for the investigator on the go. Imprinted with the NAFI seal. 16 oz. size with lid.

\$10.00



**New Color
Pocket NAFI T-shirt**

Our Pocket NAFI T-shirt. Front of shirt has the NAFI seal in red silk-screen on a Black cotton T-shirt. Left side pocket. The back of this shirt is blank.

Sizes M-XXL
\$15.00

| | |
|--|-------------------------------|
| NAFI Travel Mug | # _____ at \$10.00 each _____ |
| NAFI Pocket T-shirt | # _____ at \$15.00 each _____ |
| CVFI Emblem | # _____ at \$5.00 each _____ |
| CFEI Emblem | # _____ at \$5.00 each _____ |
| Subtotal _____ | |
| Shipping (US) | \$8.00 _____ |
| Shipping (Intl) | \$10.00 _____ |
| Total _____ | |
| <p>FL and IL residents please add sales tax. Allow 4 weeks for delivery. Prices valid while quantities last.</p> | |

Mail or Fax orders

Name _____
 Company/Institution/Department _____
 Street _____
 City _____ State _____ Zip _____ Country _____
 Telephone _____ Fax _____
 Email Address _____
 Visa/Mastercard _____ EXP. ____ / ____ (MM/YY)
 CVV ____ Billing Zip Code _____
 Name on Card _____ Signature _____
 Check/Money Order Enclosed _____

**Members order on
online at**
www.nafi.org/store

Also by mail
857 Tallevast Road
Sarasota, FL 34243

by phone
1-877-506-NAFI
1-941-359-2800
9am - 5pm EST

by fax
1-941-351-5849
24 Hours a Day

Order on-line now at www.nafi.org/store

Presort Std
US Postage
PAID
Permit 133
Manasota FL

2012 SUMMER



**INVESTIGATION
FUNDAMENTALS**

*Expert Report Writing:
Best Practices for Producing
Quality Reports.*

New National Officers!

2012 Training Schedule

Annual Meeting Recap

Certification News

National Association of Fire Investigators

857 Tallevast Road
Sarasota, FL 34243



THE NATIONAL FIRE INVESTIGATOR

NATIONAL ASSOCIATION OF FIRE INVESTIGATORS

